

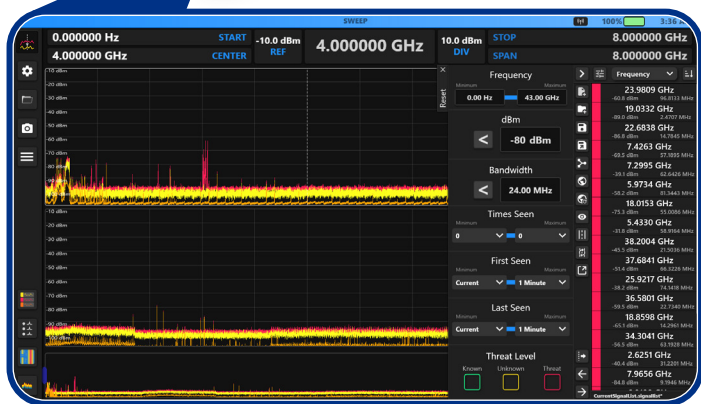
# NEW OSCOP<sup>®</sup> MAX

## Portable Spectrum Analyzer



### New OSCOP MAX portable spectrum analyzer

- Fully integrated auto-switching antenna panel, continuously sweeps/displays 10kHz - 43GHz
- Trace storage & analysis
  - Persistence
    - Raster Waterfall
    - Spectrogram
  - WiFi transmitter detection
  - Bluetooth device detection
  - SmartBars™
- Discrete Bands
  - I&Q Data Recording
  - Multi- Purpose Probe (Carrier-Current, IR, Visible Light, Ultrasonic)



Spectrum view with Signal List

### Features

- >1100GHz/sec at 10kHz resolution
- 125MHz IBW
- Weighs 10.4 lbs./4.7kg
- Dual hot-swappable Li-ion batteries
- 13" Hi-res capacitive touchscreen

Product specifications and descriptions subject to change without notice. Packaging may vary depending on model purchased.

# PRODUCT SPECIFICATIONS

**RF SYSTEM** Frequency: 10 kHz to 43 GHz  
Sweep speed: 1100 GHz/sec (estimated)  
125MHz IBW  
Preamp: 8 GHz: 15 dB  
Attenuation: 43 GHz: 0 dB, -10 dB, -20 dB, -30 dB  
Dynamic Range: 90 dB

**ANTENNA SYSTEM** Built-in auto switching antenna system (10 kHz – 43 GHz)

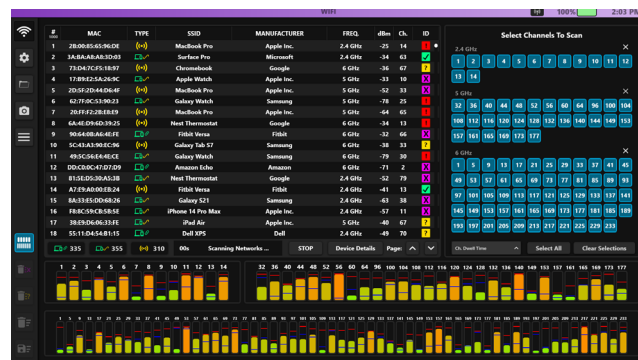
**RF IN / IF OUT** Aux RF Inputs:  
SMA Input [DC – 43 GHz]  
SMA Input [DC – 18 GHz]  
IF Output:  
SMA Output [375 MHz with 93.75MHz BW]

**AUDIO** Demodulation types: AM, FM  
Built-in speakers  
Headphone output  
Audio input

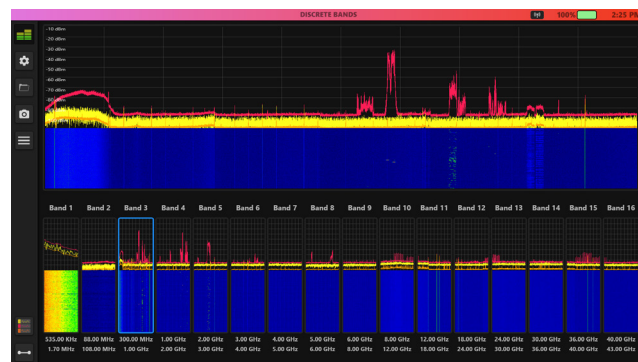
**USER INTERFACE** 13.3" Capacitive touchscreen display  
Gigabit Ethernet port

**STORAGE** 2TB M.2 NVMe SSD  
Micro SD Card Slot  
USB 3 Type A Port

**POWER SOURCES** Universal Supply: 100–240 VAC,  
Removable Batteries: 2x Rechargeable Lithium ION  
USB-C PD Charging



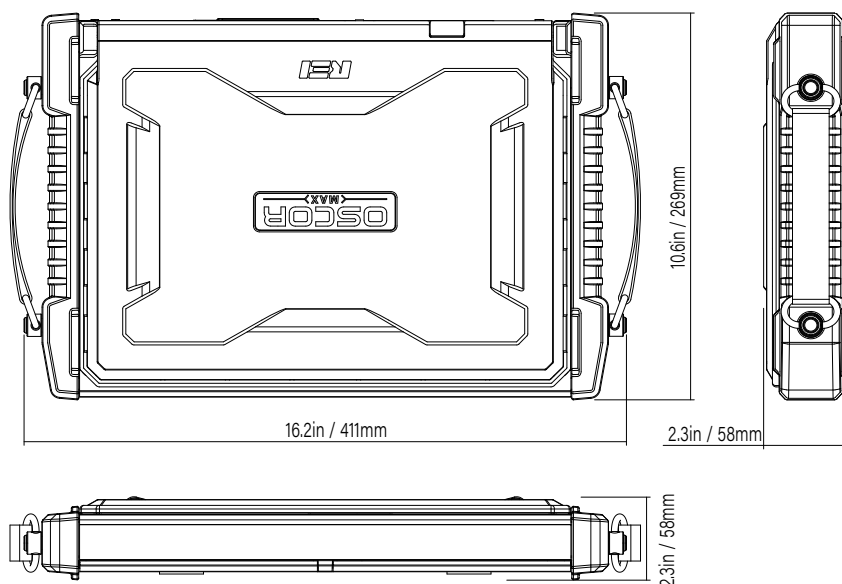
WIFI and Bluetooth analysis.



Create multiple custom bands in Discrete Bands mode.

**ACCESSORIES** Multi-Purpose Probe (MPP)  
IR  
Visible Light  
Ultrasonic  
Carrier Current

**MECHANICAL** Dimensions:  
Length: 16.2in/411mm  
Width: 10.6in/269mm  
Depth: 2.3in /58mm  
Unit Weight w/batteries (2):  
10.4 lbs/4.7kg



Research Electronics  
International



REI Equipment



@REI\_TSCM

RESEARCH ELECTRONICS INTERNATIONAL  
455 SECURITY DRIVE, COOKEVILLE, TN 38506 USA  
TEL +1 931.537.6032 • 800.824.3190 (US ONLY) • FAX +1 931.537.6089  
sales@reiusa.net • www.reiusa.net